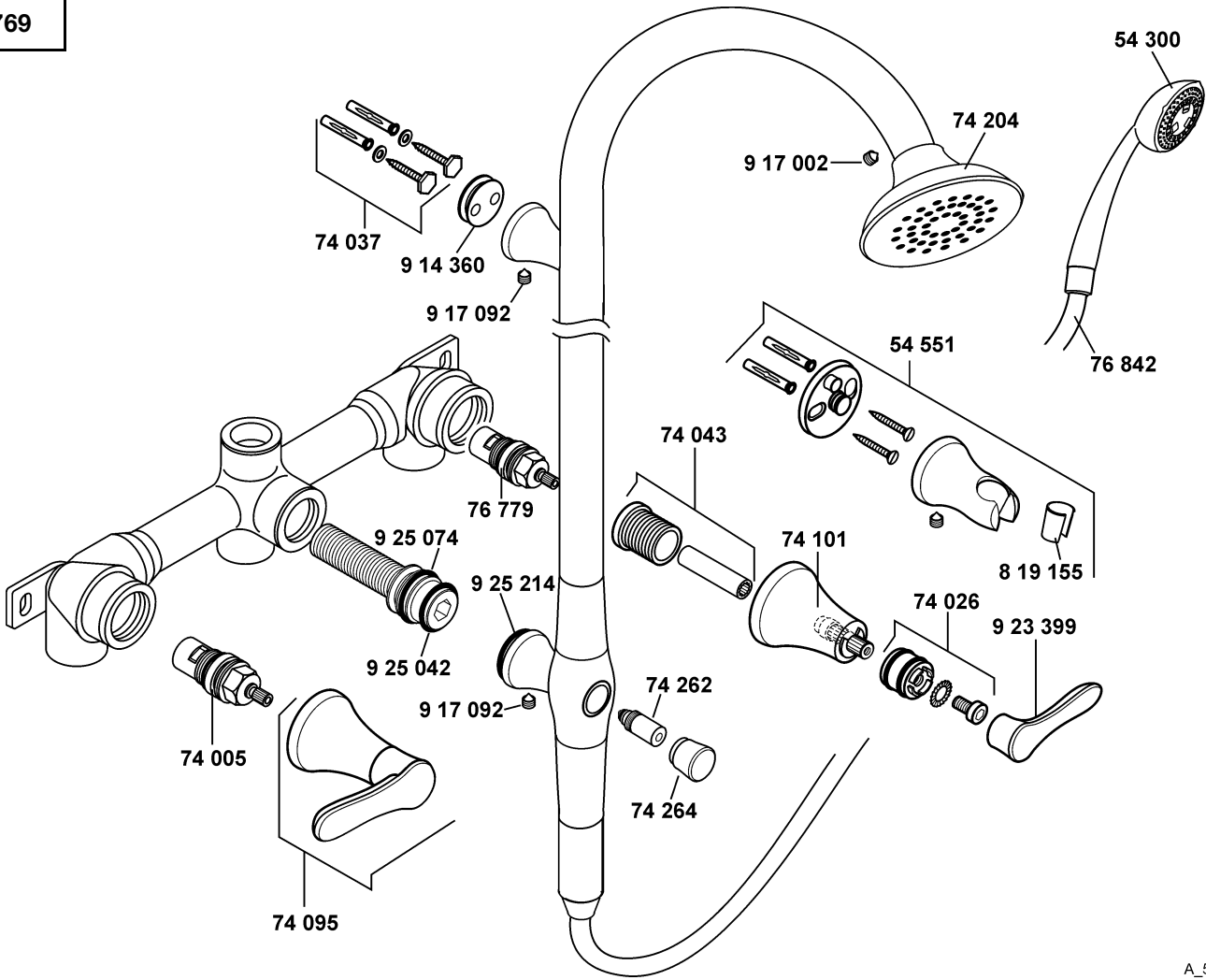


KLUDI AMPHORA

54769



A_5476975

| 54769 | Brausesäule DN 15 | pedestal shower DN 15 | douchezuil 1/2" |
|-------|-------------------------------------|-----------------------------|--------------------------------|
| | 54 300 Handbrause DN 15 | handshower DN 15 | handdouche 1/2" |
| | 54 551 Wand-Brausehalter | shower hook | wanddouchehouder |
| | 74 005 Keramik-Oberteil G 1/2, 90° | ceramic headpart G 1/2, 90° | keramisch bovendeel G 1/2, 90° |
| | 74 026 Griffbefestigung | fastening set for handle | greepbevestiging |
| | 74 037 Befestigungssatz | assembling set | bevestigingsset |
| | 74 043 Verlängerung | extension | verlenging |
| | 74 095 Griff vormontiert | handle preassembled | greep voormonteerd |
| | 74 101 Kappe | cap | dop |
| | 74 204 Kopfbrause | headshower | hoofddouche |
| | 74 262 Umstellung | diverter | omstelling |
| | 74 264 Umstellgriff | lever for diverter | omstelgreep |
| | 76 779 Keramik-Oberteil G 1/2, 90° | ceramic headpart G 1/2, 90° | keramisch bovendeel G 1/2, 90° |
| | 76 842 Brauseschlauch | shower hose | doucheslang |
| | 819 155 Konushülse | cone tubing | conische huls |
| | 914 360 Wandscheibe | wall disc | muurplaat |
| | 917 002 Auslaufbefestigungsschraube | fastening screw for spout | bev. schroef voor uitloop |
| | 917 092 Gewindestift | threading lathe | inbus schroef |
| | 923 399 Hebel, KLUDI AMPHORA | lever, KLUDI AMPHORA | hendel, KLUDI AMPHORA |
| | 925 042 O-Ring | O-ring | o-ring |
| | 925 074 Dichtung | washer | dichting |
| | 925 214 O-Ring | O-ring | o-ring |